



THE WATERFALL CENTER FOR BIOREGIONAL LEARNING

www.waterfallcenter.org • info@waterfallcenter.org



The Constitution Pipeline: A 30" fracked gas pipeline through our bioregion.

It is our responsibility as stewards of the region to be aware of how this pipeline could affect the health of our lands and community – both in its construction and its long-term operational impacts.

WHAT IS THE CONSTITUTION PIPELINE?

The Constitution Pipeline, is a proposed fracked-gas pipeline that is being developed by Williams Companies, a large operator of pipelines across the United States. As proposed, the Constitution Pipeline, the project would involve the construction of approximately **125 miles of new 30-inch diameter interstate natural gas pipeline** that would originate in northeastern Pennsylvania and extend through Broome, Chenango, Delaware, and Schoharie Counties in New York, before reaching its interconnection point at the Wright Compressor Station in the Town of Wright, Schoharie County.

In Schohaire County, the pipeline is proposed to run through the following municipalities: **Jefferson, Summit, Richmondville, Cobleskill, Middleburgh, Schoharie and Wright.**

POTENTIAL PIPELINE RISKS & CONCERNS



FIRES & EXPLOSIONS



METHANE EMISSIONS



CONTAMINATION



HUMAN HEALTH

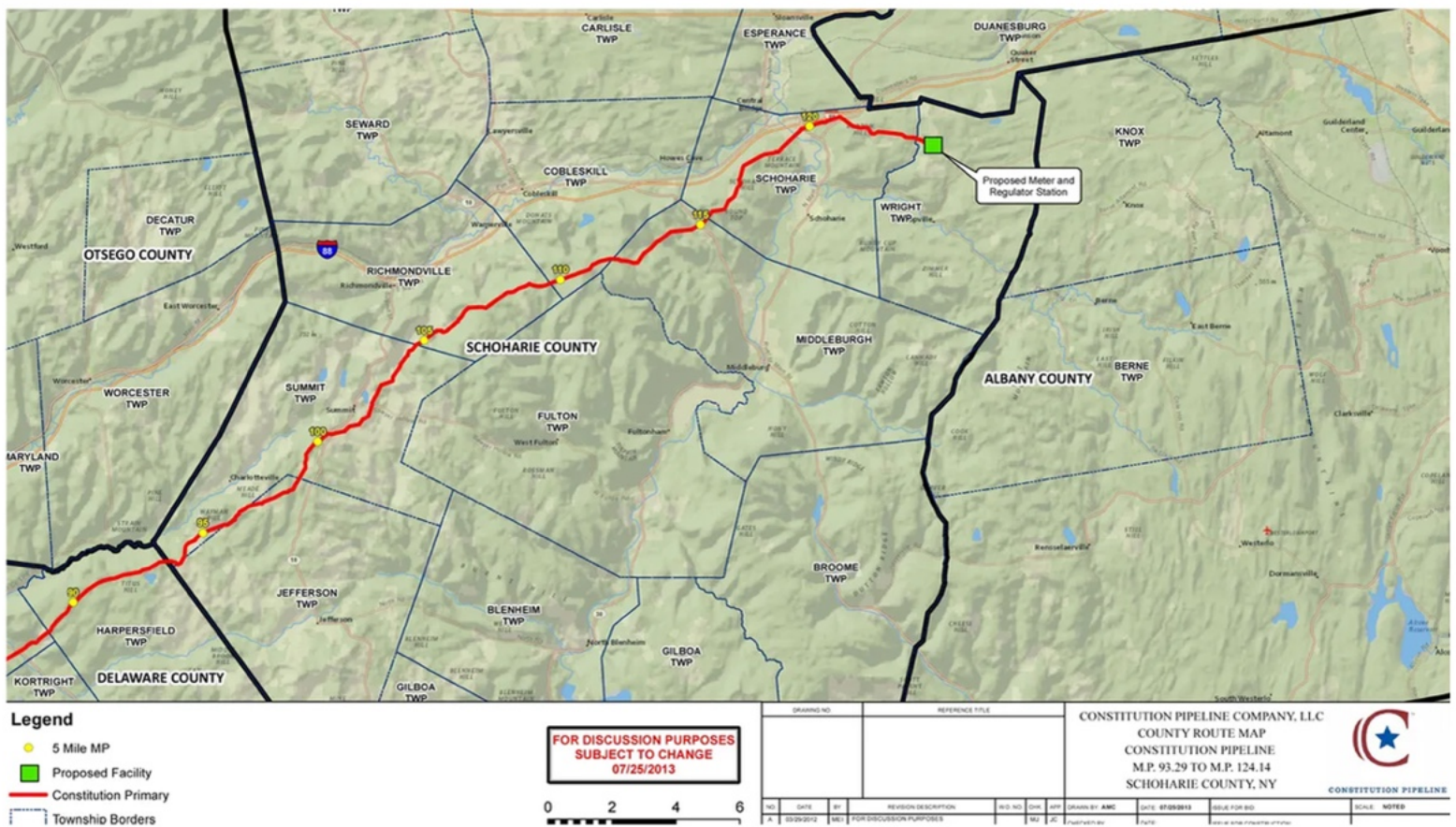
WHAT AGENCIES ARE INVOLVED IN THE APPLICATION & PERMITTING PROCESS?

Federal Energy Regulatory Commission (FERC)

The independent U.S. federal agency that regulates the interstate transmission of electricity, natural gas, and oil. FERC also reviews proposals to build interstate natural gas pipelines, natural gas storage projects, and liquefied natural gas (LNG) terminals.

New York State Department of Environmental Conservation (NYSDEC)

The state regulatory agency responsible for reviewing, and denying/approving, critical environmental permits—specifically the Clean Water Act Section 401 Water Quality Certification—for the proposed 99-mile Constitution Pipeline, which aims to cross New York. The DEC actively opposes the project, citing potential environmental damage to wetlands and waterways.



Map of the path of the Constitution Pipeline through Schoharie County, from 2015, and archived through the Ithaca Journal. More detailed maps submitted to FERC by the Williams Companies, show the land parcels the pipeline will be running through - including environmental areas such as wetlands and waterbodies.

THE CONSTITUTION PIPELINE PROJECT WOULD:

1. require the clearing of 1,872 acres of land,
2. the destruction of approximately 700,000 trees on 1,034 acres of forest,
3. cross 289 bodies of water, most of them cold-water trout streams,
4. impact over 95 acres of wetlands, of which 34 acres are irreplaceable forested wetlands,
5. climb or descend over 35 miles of steep slopes,
6. have to blast through 45.5 miles of shallow bedrock, and
7. provide gas for factories, power plants, and AI data centers all along the I-88 corridor.

SOURCE: www.stoptheconstitutionpipeline.org

The Waterfall Center, as an educational resource, looks to provide factual information that addresses the concerns of the community and how a pipeline running through our bioregion could adversely affect the health of our people, landscape, ecology and rural culture.

Visit our Constitution Pipeline page at:
<https://www.waterfallcenter.org/constitutionpipeline>

ADDITIONAL RESOURCES: LEARN MORE, STAY UP TO DATE ON PIPELINE PROGRESS, & CALLS TO ACTION

STOP THE CONSTITUTION PIPELINE
<https://stoptheconstitutionpipeline.org/>

NEW YORK STATE DEC -
CONSTITUTION PIPELINE PROJECT
<https://dec.ny.gov/environmental-protection/-facilities-in-your-neighborhood/constitution-pipeline-project>

FERC - SUBMITTED PROJECT
DOCUMENTS
https://elibrary.ferc.gov/eLibrary/filelist?accession_num=20251219-5626

